



Bathing establishment Fact Sheet

Bathhouse name	BERNINA
Address	VIA IV NOVEMBRE, 10
City	CINQUALE MONTIGNOSO (MS)
Contacts	+39 0585 309498
Website	https://www.facebook.com/p/Bagno-Bernina-100057217970614/?locale=it_IT

TESTED BY: [Handy Social Promotion Association Surpassable](#) in summer 2023

Please note The following information refers to the verification date shown at the bottom of each card. **The Association** is not responsible for any significant changes made by the property after the visit.

Summary

Bathing establishment Fact Sheet	1
Arrival at the facility	2
Private/public parking.....	2
Pathway from the parking lot to the main entrance	2
Reception.....	3
Bar/restaurant	4
Internal Pathways and common services.....	5
Internal Pathways	5
Toilet and shower accessible to guests with reduced mobility	5
Changing room	7
Beach.....	8
Children's play area	9
Swimming pool	10
Doctors' Offices/Healthcare Facilities	10



Project carried out with the contribution of the





Arrival at the facility

Private/public parking


Presence of private parking	YES
Type of private car park	gravel
Presence of parking space reserved for people with disabilities	YES
Public parking nearby	YES with n. 1/2 places reserved for the disabled at approx. 50/100 meters
Type of public car park	asphalt
	

Pathway from the parking lot to the main entrance

Pathway from the car park to the entrance	From the public car park via connecting ramps from the road surface to the pavement at the entrance to the private car park there is a ramp with a slope of 16 to 20%. From the private car park, the
---	---





	establishment is accessed via a ramp: length 50 cm, width >90 cm, slope 12%
There are markers and tactile maps	NO
Usable door/entrance width	more than 90 cm
	

Reception

Umbrella booking system	<input type="checkbox"/> Via web <input checked="" type="checkbox"/> By phone <input checked="" type="checkbox"/> On-site
Presence of multilingual staff	YES
Presence of plant plan with key to services available	NO
Presence of visuo-tactile map	NO
Bulletin board/information panels at an average height of 130 cm in a well-lit area and font size at least 14 dpi with a contrast ratio greater than 4.5:1	NO

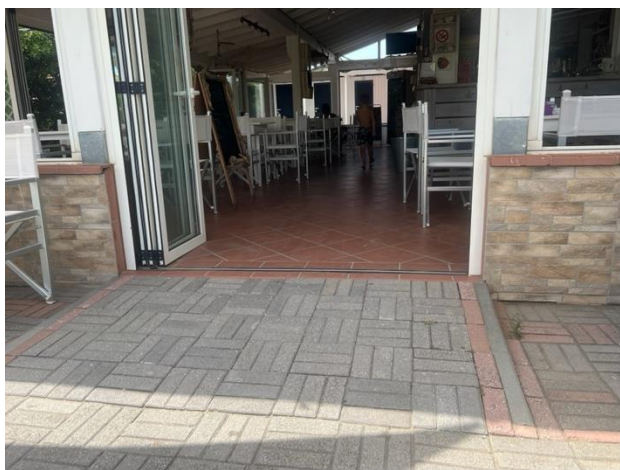




The staff attended training courses on welcoming people with different disabilities	NO
---	----

Bar/restaurant

Type of venue	Bar/restaurant
Access to the premises	by ramp length 120 cm, width <90 cm, slope 5/7 %
Usable door/entrance width	more than 90 cm
Bar counter	more than 100 cm
Types of tables	legged
Space underneath the tables from the floor	more than 65 cm
Multilingual menu	NO
Menus with large print fonts	NO
Braille menu	NO
Table service for people with disabilities	YES
Availability of gluten-free food	<input type="checkbox"/> bread <input checked="" type="checkbox"/> pasta <input type="checkbox"/> biscuits <input checked="" type="checkbox"/> ice cream <input type="checkbox"/> Pre-packaged foods





Internal Pathways and common services

Internal Pathways

Indicate whether the pathways connecting the entrance to the beach are flat or with ramps in addition to those already described	Obstacle-free paths
--	---------------------

Toilet and shower accessible to guests with reduced mobility

Number of toilets accessible/usable by guests with reduced mobility	1
Access to the premises	by width > 90 cm slope 6 %
Usable width of the entrance door	90 cm
Toilet height	50 cm
Open front toilet seat	NO
Support handles	on both sides

Project carried out with the contribution of the






Flexible hand shower at the side of the toilet	NO
Free space on the sides of the toilet	left 33 cm right 55 cm frontal 80 cm
Electric doorbell/phone	YES
Washbasin with space underneath for wheelchair	65 cm
Height from the ground on the bottom edge of the mirror	Suitable for wheelchair users
Baby changing table	NO
	
	
Accessible shower available for guests with reduced mobility	Yes outdoor without canopy





Access to the shower room if separated from the toilet room	Flat
Useful width of the door/entrance gate if separated from the toilet room	more than 90 cm
Shower type	open-type
Floor-level shower	NO with 6 cm high step
Shower chair	missing
Grab bar	missing
Presence of shower head or ups and downs	fixed shower head
Electric doorbell/phone	NO
	Outdoor showers

Changing room

Accessible changing room available for guests with reduced mobility	YES
Access to the premises	Flat
Usable door/entrance width	90 cm
Size of the dressing room	width 140 cm and depth 175 cm
Presence of a cot	NO
Coat rack height from the ground	175 cm



Project promoted by



Regione Toscana



Beach

Type of beach	sand
Access to the beach	Flat
Walkway to reach the umbrellas	YES
Type of walkway	wood
Walkway width	100 cm



Project carried out with the contribution of the



Presidenza del
Consiglio dei Ministri
Ministro per la disabilità



Removable Platform between the walkway and the umbrella station to facilitate the passage and parking wheelchair	YES
Amphibious beach chair available for helping people with reduced mobility to enjoy swimming (owned by the establishment or by association)	YES
	

Children's play area

Children's play area	inaccessible to children with reduced mobility due to sandy bottom
There are games for children with reduced mobility	NO





Children's play area

Swimming pool

The property has a swimming pool	NO
----------------------------------	----

Doctors' Offices/Healthcare Facilities

Hospitals near the facility	NOA NUOVO OSPEDALE APUANE Via Enrico Mattei, 2, 54100 Marina di Massa MS tel.: +39 0585 4931
Other Healthcare Facilities	Località Partaccia via delle Pinete 197/b Marina di Massa Tel.: +39 335 8001617

TESTED BY: **Handy Superabile Social Promotion Association in summer 2023**

